

Science Hall

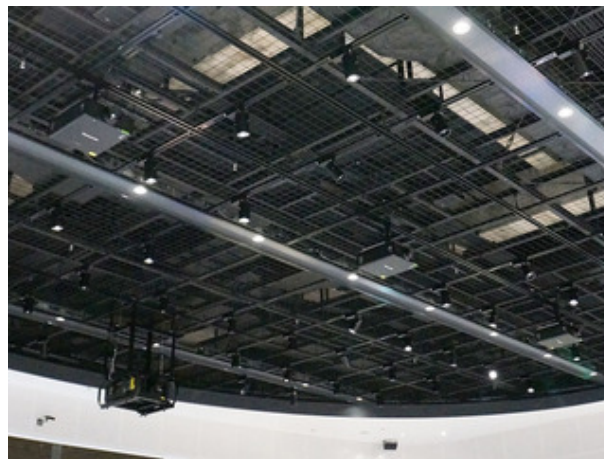
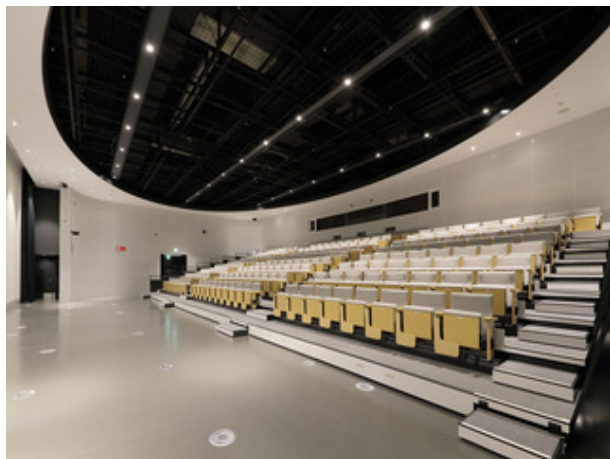
サイエンスホール

■Purpose of Exhibition

This facility normally serves as the Aichi-Nagoya Nobel Laureate Commemorative Hall. On occasion, however, it is transformed into a lecture hall with the large projectors in order to present lectures and other science-related events. In an effort to popularize the sciences, it combines a relaxing atmosphere with advanced equipment.



■Additional Knowledge



Retractable seating

Transforming the Exhibition Hall into a lecture hall requires that seating be put in place. The seating in the hall is normally stored against the wall opposite the screen. The press of a single button causes the seating — an arrangement of movable seats called fully automatic retractable seating — to move into place, creating theater seating with a capacity of 210.

Large video projectors

The Science Hall is equipped with a 400-inch 4K projector and three smaller projectors designed to project a series of horizontal images stitched together. This is normally used as a hall for lectures and movie screenings using only the large 4K projector. The projector is mounted on the ceiling so that no shadows appear if the presenter remains at least three meters from the screen.
